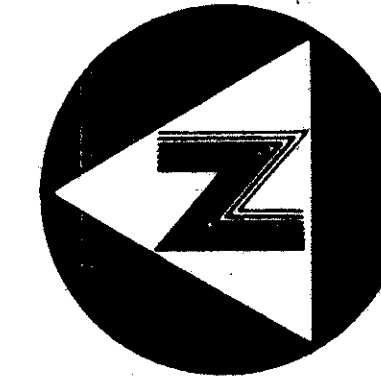


42/16

A PLANNED UNIT DEVELOPMENT
CANNONGATE PLAT NO. 4
 BEING A REPLAT OF MODEL LAND COMPANY'S
 SUBDIVISION OF SECTION 2, TOWNSHIP 44 SOUTH,
 RANGE 42 EAST, PLAT BOOK 5, PAGE 80
 PUBLIC RECORDS, PALM BEACH COUNTY, FLORIDA

SHEET 3 OF 3



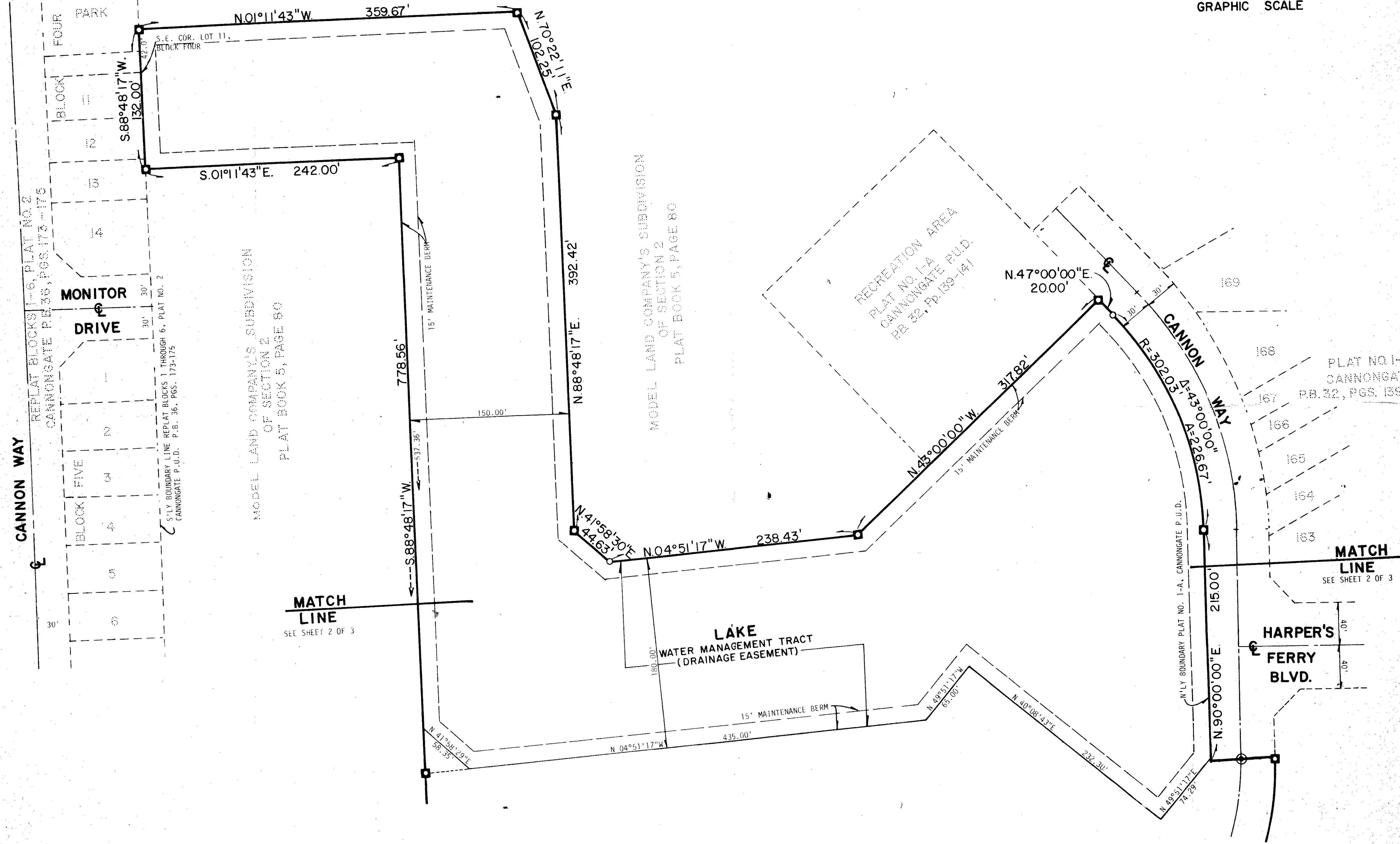
0' 50' 100'
 GRAPHIC SCALE

16

STATE OF FLORIDA
COUNTY OF PALM BEACH

THIS PLAT WAS FILED FOR
 RECORD AT _____ M.
 THIS _____ DAY OF _____
 A.D. 1980 AND DULY RECORDED
 IN PLAT BOOK _____ PAGES
 AND _____

JOHN B. DUNKLE, CLERK
 CIRCUIT COURT
 BY: _____ DC



0220-305

42/16

BENCH MARK
land surveying and mapping, inc.

CANNONGATE PLAT NO. 4

DESIGNED	DRAWN	CHECKED	FILE NO.	DRAWING NO.
			P7305	
DATE	SCALE	APPROVED	FILE NO.	SHEET OF
6-80	1"=50'			3 3

THIS INSTRUMENT WAS PREPARED BY ROBERT J. WHIDDEN, IN THE OFFICES OF BENCH MARK LAND SURVEYING AND MAPPING, INC., 2833 EXCHANGE COURT, WEST PALM BEACH, FLORIDA 33409. PHONE: (305) 689-2111